

VOYAGER

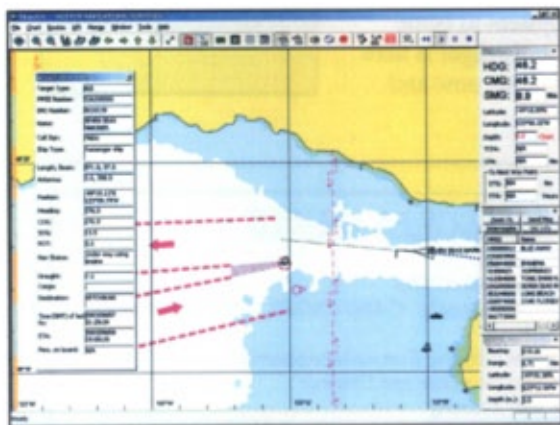
Sailing into the Future

The TITAN Voyager clearly displays critical information that aids the navigator in his decision making. Voyager unlocks a wealth of navigational data from an AIS (Automatic Identification System) and effectively sorts through it. When Voyager is connected to the AIS, it provides the bridge team with quality and timely situational awareness of the surrounding waters on our specially designed Electronic Chart System.

Voyager provides the mariner with comprehensive visualization on other vessels within proximity of his own ship. It allows the mariner to quickly and easily query other vessels to determine their course, speed, heading along with other vital data which will help in decision making. In addition Voyager is a world class ECS providing significant navigational functions never seen before on an inexpensive system.

Your safety is VOYAGERS' primary function

Existing navigation equipment has provided task specific tools to the navigator. Despite these advancements, there has been no way of accurately determining what is around a corner, or what is hidden by an island or superstructure on the water, or knowing - "who is it that is off my port bow?"



By connecting to your AIS, Voyager begins to receive electronic data from other vessels.

Once this information has been received, it is interpreted and displayed in a precise and meaningful manner. Voyager allows you to very quickly gather the information you require and display it in a way that is best for you. It is completely flexible in the screen layout and can be easily modified by each user, once done, it remembers your preferences and when you sign on next time, it will automatically adjust the display to your settings.

Voyager was developed specifically to display the data being transmitted from an AIS. It is the first system that has embraced the AIS first concept. The powerful ECS is the mechanism that is used to present AIS information to you rather than having an ECS or ECDIS with AIS as an after thought.

By utilizing a familiar Windows environment the learning curve is significantly reduced. Anyone familiar with a Windows product will very quickly become a proficient user of Voyager.

Getting more out of your AIS

The amount of data that is being broadcast over VHF from your AIS is significant. Until now, most of that information is being wasted or not used at all. With Voyager we have studied what is available and have put this into an easy to use, powerful information tool for you.

In addition to what is already being broadcast through static and voyage related data we supplement this with a number of compliant messages. These range from sending text messages, to safety messages, to a unique Man Overboard where the information of the Latitude and Longitude along with the time and date and ship information is sent automatically once you click on the Man Overboard icon.

Another unique and significant safety feature we have implemented is the SID function, or Ship In Distress. There we have a simple menu item that when chosen, will allow you to have the AIS automatically broadcast to all ships and

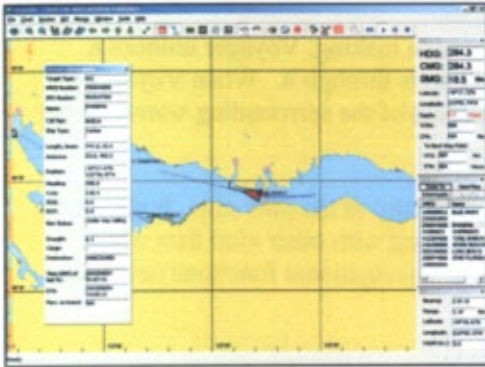
VTS's your ship name, continuously updating your ship position, course, speed and heading, type of cargo you have an



number of persons onboard. As well, menu items allow you to quickly alert all AIS vessels and VTS's of the type of Distress you are experiencing, such as fire, or taking on water. This is broadcast continuously until it is shut off by a user.

VOYAGER DISPLAY

The importance of knowing at a glance if a vessel is carrying dangerous goods is imperative for safe navigation. With



Voyager each vessel that is carrying dangerous goods is easily identified by simply colour coding the existing AIS symbol on your system. Just by looking at the screen, you can

tell who is carrying what type of Dangerous Goods.

Other great features include environmental data where areas that are equipped with sensors or are broadcasting standard VOLPE messages are picked up by the Voyager software and can be graphically displayed or displayed by textual information.

Another advantage would be in an area where there is a rugged coastline, restricting your line of sight and rendering your radar almost useless. With Voyager, you can see all AIS equipped vessels within a large safety zone of up to 60 Miles.

By simply clicking a ships icon on the screen, you are able to see information about that vessel such as; ship name, MMSI Number, that ships course, speed, heading, length and beam, rate of turn, type of cargo, which direction it is really turning, type of cargo, number of passengers on board and other related information important for you when making decisions.

In addition, you can ask Voyager to watch for any vessels within a certain distance to you, or that will potentially become a hazard to your ship. There are user defined parameters which are set that allows Voyager to monitor for these events and then warn you well in advance of something happening.

Perhaps the greatest safety information system to come along in years, Voyager is here to serve your needs now and into the future.

Vessel information	
Target Type:	AIS
MMSI Number:	226205000
IMO Number:	9210139
Name:	SEVEN SEAS MARINER
Call Sign:	FNDU
Ship Type:	Passenger ship
Length, Beam:	216.1, 28.5
Antenna:	123.9, 18.5
Position:	49°19.08'N 123°19.90'W
Heading:	268.0
COG:	267.4
SOG:	19.6
ROT:	0.0
Nav Status:	Under way using engine
Draught:	7.0
Cargo:	
Destination:	KETCHIKAN
Time (GMT) of last fix:	2003/06/07 01:51:04
ETA:	2003/06/08 15:00:56
Pers. on board:	798

VOYAGER AIS FEATURES

- ✓ Display own ship position
- ✓ Display all other AIS Vessels
- ✓ Send and receive text messages
- ✓ Send and receive safety messages
- ✓ Query other ships AIS Data
- ✓ Set safety zones
- ✓ View environmental information graphically and textually
- ✓ See other ships speed and heading vector
- ✓ SID (Ship In Distress) send and receive
- ✓ Reduced voice communications
- ✓ Easily recognized vessels carrying Dangerous goods
- ✓ Accurate TCPA and CPA
- ✓ Selectable warnings for a number of situational occurrences
- ✓ Vessel lists of other AIS equipped ships
- ✓ History Tracking for up to 7 days
- ✓ Customized Applications are available

ECS FEATURES

- ✓ Easy to use ICONS
- ✓ Display formats: C-Map CM93/3 - S57 - B.A. Arcs - VPF
- ✓ Route Planning (can name waypoints)
- ✓ Cross Bow Time and Distance
- ✓ Chart Zooming
- ✓ Automatic Chart Updating available
- ✓ Day to Night Screen Dimming
- ✓ Man Overboard
- ✓ Dockable Windows for customization
- ✓ Cursor Positioning Data
- ✓ Connection through AIS to ships electronic navigation equipment
- ✓ Anti Grounding
- ✓ World wide Tide Charts
- ✓ North, Route and Course Up Display
- ✓ Multiple Chart Windows



Sea and Land Technologies Pte Ltd

65 Tuas Avenue 1
Singapore 639508

Tel : (65) 6518 0777
Fax : (65) 6563 0366

Email: enquiry@sea-landtech.com.sg
Web Site : <http://www.sea-landtech.com.sg>

