





# Void Scanner 150 Mk2

## RUGGEDISED UNDERGROUND 3D LASER SCANNER

### The VS 150 is a development of the Cavity Auto Laser Scanning (C-ALS) System.

The VS150 is designed to operate in demanding underground mining environments and may be used to measure voids, stopes and rock faces in difficult to access areas.

The VS150 may be deployed conventionally using survey tripods or by remote control when deployed on rods, booms, masts, lifts and cranes.

The VS150 is small (overall width 140mm and length 503mm), lightweight (5.0kg) for easy transportation and extremely rugged.

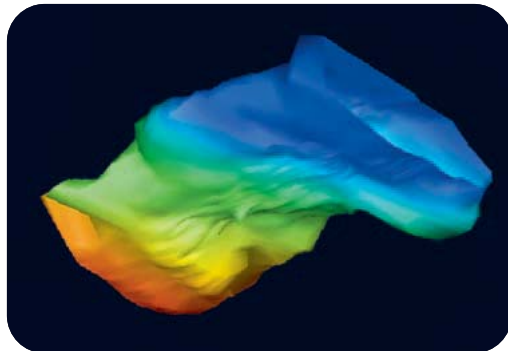
Simple to use, the dual axis motorised instrument scans 200 points per second and stores the data on rugged tablet PC or laptop computers.

The VS150 comes complete with MDL's software to display (in real time) laser point clouds in 3D.

Data may be exported into MDL's Voidworks for further processing, or to most CAD mine survey software packages.

#### Key Features

- Pulse time of flight laser distance meter
- Visible red laser pointer for alignment
- Built in digital pitch and roll meter
- Direct reading optical encoders (horizontal and vertical angles)
- RS232 data and control interface
- 12 Volt DC operation (10.5V DC to 17V DC)

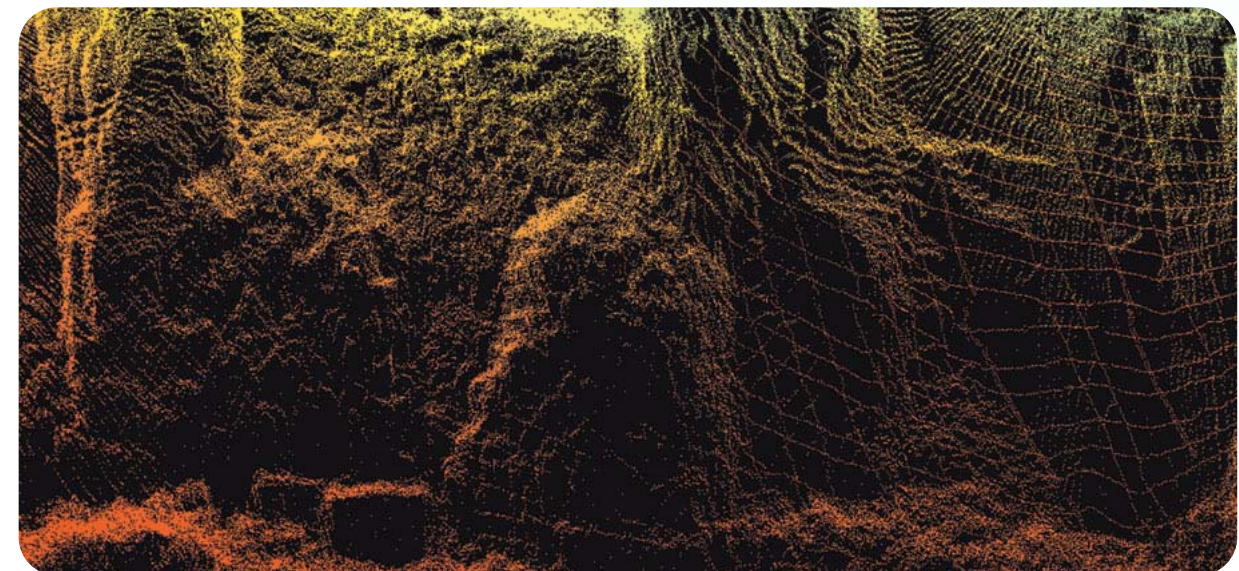


Void scan

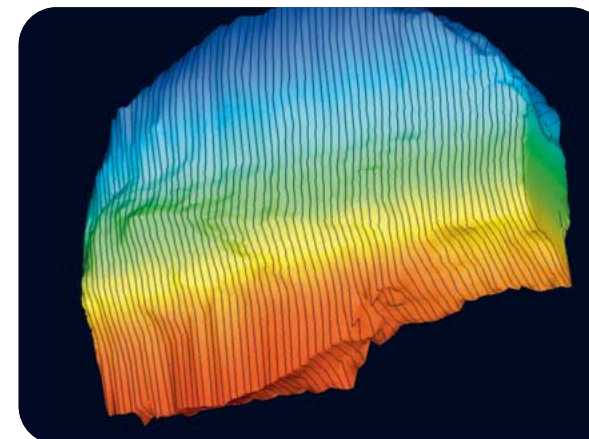
## Safe and fast precision scanning of voids and cavities

#### Benefits

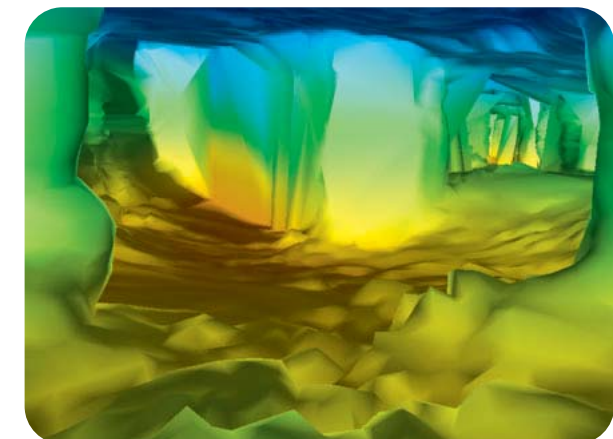
- Survey dangerous areas by remote control
- Fast accurate 'onsite' results
- 3D solution
- Direct angle measurement for accuracy
- Easy to use
- Highly portable
- Low cost of ownership
- Worldwide support



Pillar and retaining wall detail



Gold mine remote void



Mine fly through

