



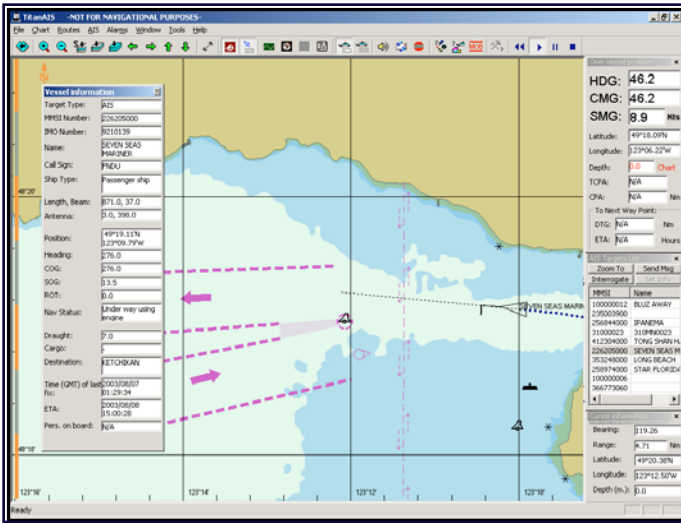
XANATOS
MARINE

TITAN VOYAGER

TITAN VOYAGER clearly displays critical information that aids a mariner in their decision making. **TITAN VOYAGER** unlocks a wealth of navigational data from AIS (*Automatic Identification System*) as well as ARPA Radar and effectively sorts through it. When connected to the sensors, it provides the bridge team with quality and timely situational awareness of the surrounding waters on our specially designed Electronic Chart System.

TITAN VOYAGER provides the mariner with comprehensive visualization on other vessels within proximity of their own ship. It allows the mariner to quickly and easily query other vessels to determine their course, speed, heading along with other vital data which will

help in decision making. In addition, **TITAN VOYAGER** is a world class ECS providing significant navigational functions never seen before on an inexpensive system.



Your safety is **TITAN VOYAGER'S** primary function

Existing navigation equipment has provided task specific tools to the navigator. Despite these advancements, there has been no way of accurately determining

what is around a corner, what is hidden by an island or superstructure on the water or knowing "who is it that is off my port bow?" By connecting to your AIS, **TITAN VOYAGER** begins to receive electronic data from other vessels.

Once this information has been received, it is interpreted and displayed in a precise and meaningful manner. **TITAN VOYAGER** allows you to very quickly gather the information you require and display it in a way that is best for you. **TITAN VOYAGER** is completely flexible in screen layout and can easily be modified by each user. One programmed, it remembers your preferences so when the user signs on next time it will automatically adjust the display to their settings.

TITAN VOYAGER was developed specifically to display the data being transmitted from an AIS. It is the first system that has embraced the AIS first concept while still utilizing ARPA.

The powerful ECS is the mechanism that is used to present AIS information to you rather than having an ECS or ECDIS with AIS as an after thought.

By utilizing a familiar Windows environment the learning curve is significantly reduced. Anyone familiar with a Windows product will very quickly become a proficient user of **TITAN VOYAGER**.



AIS FEATURES

- ✓ *Display own ship position*
- ✓ *Display all other AIS Vessels*
- ✓ *Send and receive text messages*
- ✓ *Send and receive safety messages*
- ✓ *Query other ships AIS Data*
- ✓ *Set safety zones*
- ✓ *View environmental information graphically and textually*
- ✓ *See other ships speed and heading vector*
- ✓ *SID (Ship In Distress) send and receive*
- ✓ *Reduced voice communications*
- ✓ *Easily recognized vessels carrying Dangerous goods*
- ✓ *Accurate TCPA and CPA*
- ✓ *Selectable warnings for a number of situational occurrences*
- ✓ *Vessel lists of other AIS equipped ships*
- ✓ *History Tracking for up to 7 days*

TITAN VOYAGER

ECS FEATURES

- ✓ Easy to use ICONS
- ✓ Display formats:
C-Map CM93/3 - S57
- ✓ Route Planning
(can name waypoints)
- ✓ Cross Bow Time and Distance
- ✓ Chart Zooming
- ✓ Automatic Chart Updating available
- ✓ Day to Night Screen Dimming
- ✓ Man Overboard
- ✓ Dockable Windows for customization
- ✓ Cursor Positioning Data
- ✓ Connection through AIS to ships electronic navigation equipment
- ✓ Anti Grounding
- ✓ World wide Tide Charts
- ✓ North, Route and Course Up Display
- ✓ Multiple Chart Windows

Getting more out of your AIS

The amount of data that is being broadcast over VHF from AIS is immense and until now most information is wasted if used at all. In studying what information is available, **TITAN VOYAGER**, has been developed into an easy to use, powerful information tool.

In addition to what is already being broadcast through static and voyage related data, **TITAN VOYAGER** supplements this with a number of compliant messages. These range from sending text messages, safety messages, to a unique Man Overboard where information of the latitude, longitude, time, date and ship information is sent automatically once the Man Overboard icon is clicked.

Another unique and significant safety feature implemented in **TITAN VOYAGER** is the SID function (*Ship In Distress*). When selected, a simple menu item will allow the AIS to automatically broadcast to all ships and VTS's, the ship name while continuously updating the ship position, course, speed and heading, type of cargo and number of persons onboard. Menu selections also allow users to quickly alert all AIS vessels and VTS's of the type of Distress the ship is experiencing (*such as fire or taking on water*). This is broadcast continuously until shut off by a user.

TITAN VOYAGER AIS Display

The importance of knowing at a glance if a vessel is carrying dangerous goods is imperative for safe navigation. With **TITAN VOYAGER** each vessel that carries dangerous goods is easily identified by simply color coding the existing AIS symbol on your system. Just by looking at the screen, users can tell who is carrying what type of Dangerous Goods.

Other great features include environmental data. Areas that are equipped with sensors or are broadcasting standard VOLPE messages are picked up by **TITAN VOYAGER** software and can be graphically displayed or displayed by textual information.

In areas of rugged coastlines that restrict line of sight and render radar almost useless, **TITAN VOYAGER**, allows users to see all AIS equipped vessels within a large safety zone of up to 60 miles. By simply clicking a ships icon on the screen, users are able to see information regarding that vessel such as *ship name, MMSI Number, ships course, speed, heading, length and beam, rate of turn, type of cargo, turning direction, type of cargo, number of passengers on board* and other related information important for you when making decisions.

In addition, **TITAN VOYAGER** can monitor any vessels within a certain distance (users are able to define the parameters) or vessels that will potentially become a hazard to the ship.

Perhaps the greatest safety information system to come along in years, **TITAN VOYAGER** is here to serve your needs now and into the future.

Authorized Distributor:



Sea and Land Technologies Pte Ltd

65 Tuas Avenue 1, Singapore 639508
Tel: +(65) 6518 0777 Fax: +(65) 6563 0366
enquiry@sea-landtech.com.sg
<http://www.sea-landtech.com.sg>



Suite #207 - 3190 St. John's Street, Port Moody, British Columbia, Canada V3H 2C7
Phone: +1 604 469 5892 Fax: +1 604 469 5895 Website: www.xanatosmarine.com