

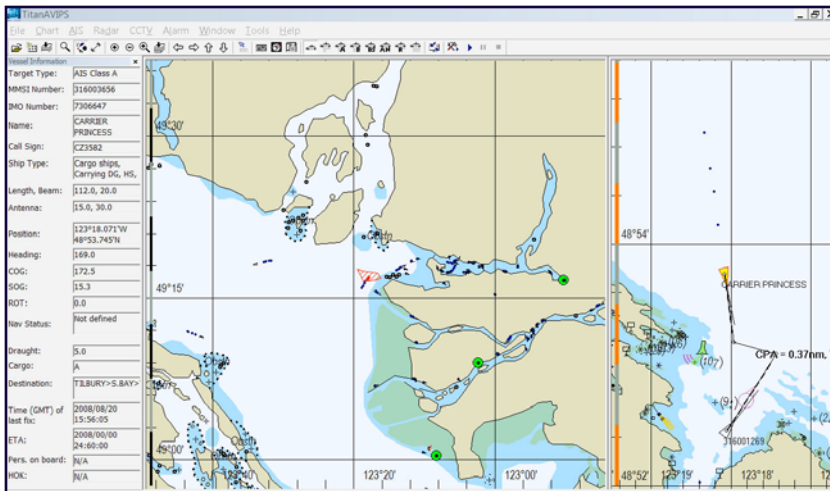


**XANATOS**  
**MARINE**

# TITAN SENTINEL

**TITAN SENTINEL** has been specifically designed for small to medium sized ports and other authorities who have a need for monitoring vessels within its waters but cannot afford the very expensive VTMS's that are common today.

With an abundance of features designed to assist in the daily operation of a port the system will soon become an integral part of your team. Some of the many highlights of the software integrated into **TITAN SENTINEL** include: *Sensor Integration, High Quality Vector Electronic Charting as the platform, Collision Monitoring, Geo Fencing, History Replay, AIS Networking, and much more.*



## INFORMATION AT YOUR FINGERS:

**TITAN SENTINEL** fuses data from several external sensors providing an integrated display system which allows our users to have a single point of viewing in a clearly laid out fashion. The sensors utilized can be implemented either separately or collectively and would include AIS, ARPA/Radar and CCTV. Other devices can be integrated as well such as Satellite Data, Swimmer Detection sonars and more.

### AIS as a Core Technology

With **TITAN SENTINEL** you get all relevant AIS data about vessels within range. You can “see” the ships and get textual information about each appropriately equipped vessel. As soon as a target comes within range of the AIS Transponder **TITAN SENTINEL** begins to display information about that ship.



This information includes: *Ship Name, MMSI, Call Sign, Range, Bearing, Ship Type, Length and Beam, Antennae Positioning, the Ships Latitude and Longitude, Heading, COG, SOG, ROT, Ship Status (Underway, at Anchor, etc) the Draught, Cargo Type, Destination, Last Fix, ETA and Persons on Board.*

Although **TITAN SENTINEL** is low in price, it is packed with valuable features. The functions below are only a small example of what can be expected when you install **TITAN SENTINEL**.

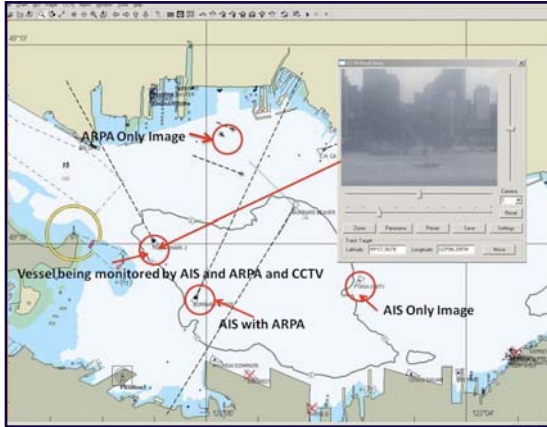
- ✓ Distance between vessels
- ✓ Monitoring for collision avoidance
- ✓ Visual identification of ships containing dangerous goods
- ✓ Send and receive messages
- ✓ Automating the sending of notices to mariners via AIS
- ✓ High quality vector charts
- ✓ Change ship symbols and colors
- ✓ Alarms
- ✓ Integration of AIS
- ✓ Integration of CCTV
- ✓ Integration of Radar
- ✓ Zoom in and zoom out
- ✓ Isolate vessels for specific monitoring purposes
- ✓ Globally networked
- ✓ Adjustable zone guards
- ✓ And more...

# TITAN SENTINEL

## ARPA/Radar

When a vessel is not equipped with an AIS transponder the local radar will be able to locate that vessel. **TITAN SENTINEL** then displays that vessel as an ARPA target. The operator can add the appropriate name to the target and it will stay with that vessel as it travels throughout the port.

When a ship has an AIS and is also seen by the RADAR, **TITAN SENTINEL** will default to the AIS because it is more accurate and provides significant information automatically. The system will acknowledge that it has acquired the target with both AIS and ARPA Radar by placing a large black dot inside the standard AIS symbol. **TITAN SENTINEL** constantly monitors the ship to ensure that it is indeed one vessel. Should it be a “shadow” between two vessels and they separate the symbols will reflect that on the monitor.



*Harbor Management*

## CCTV

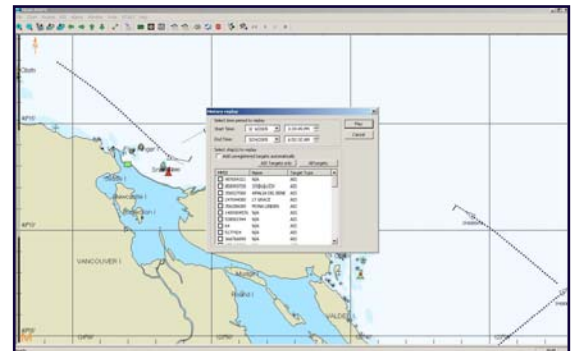
**TITAN SENTINEL** has the ability to view a vessel and display it on the screen. Our unique “Point and Follow” technology allows you to identify a vessel, click on it, and the CCTV automatically follows that particular vessel until instructed to stop or the vessel goes outside a coverage area.

## History Tracking

**TITAN SENTINEL** stores all information in our data base for as long as the users wish and there is space disk for. By selecting the required timeframe the system will replay all recorded information.

## Data Base

**TITAN SENTINEL** can record relevant information to a Database which can be used for reporting and management requirements.



*History Tracking & Replay*

## High Quality Electronic Charts

**Xanatos Marine** has chosen C-Map as our preferred supplier of high quality charts. Their exceptional chart quality and updating services are second to none in the world. S-57 formats can easily be displayed should they be required. With worldwide coverage, there is an excellent chance we have Vector charts available for your port and coastal approaches.

**Authorized Distributor:**



**Sea and Land Technologies Pte Ltd**

65 Tuas Avenue 1, Singapore 639508  
Tel: +(65) 6518 0777 Fax: +(65) 6563 0366  
enquiry@sea-landtech.com.sg  
http://www.sea-landtech.com.sg



**XANATOS  
MARINE**

*Suite #207 - 3190 St. John's Street, Port Moody, British Columbia, Canada V3H 2C7*

*Phone: +1 604 469 5892 Fax: +1 604 469 5895 Website: [www.xanatosmarine.com](http://www.xanatosmarine.com)*