



StarFish

seabed imaging system

FEATURES:

- THE SMALLEST SIDE SCAN TOWFISH ON THE MARKET
- PIONEERING, INNOVATIVE DESIGN
- EASILY TRANSPORTABLE - FITS IN A SMALL RUCKSACK
- PLUG & PLAY USB INTERFACE TO ANY PC
- EASILY POWERED FROM ALMOST ANY SOURCE
- SIMPLE INTUITIVE SOFTWARE

APPLICATIONS:

- DIVE CLUBS
- LAW ENFORCEMENT / HOMELAND SECURITY
- SHIPWRECK HUNTING / TREASURE HUNTING
- UNDERWATER RESEARCH / ACADEMIC INSTITUTES
- FISHERIES / ANGLING / SPORT FISHING
- OFFSHORE OIL & GAS INDUSTRY
- UNDERWATER ENGINEERING PROJECTS / SURVEY



StarFish is a revolutionary, high definition, side scan sonar which produces near photo-quality images of the seabed. Built to a unique, innovative design StarFish is currently the smallest side scan towfish on the market.

Since the first seabed imaging sonars were developed, manufacturers have predominantly focused on a cylindrical or torpedo-shaped towfish body. Research into underwater hydrodynamics has shown that the torpedo-shape many associate with side scan sonars may not be the optimum design.

Today we have created a revolutionary, new tow body challenging these old concepts and providing several advantages. The compact design and unique shape dramatically improve the stability of the sonar and with it the quality of the seabed images.

The near photo-quality images produced by StarFish make it an affordable, low-cost side scan sonar compared to many larger commercial side scan systems.

The advanced digital CHIRP acoustic techniques used by StarFish offer better range resolution compared to conventional fixed-frequency side scan sonars.

StarFish is truly 'Plug and Play' connecting to your PC or laptop via a USB Port. It out performs many larger commercial systems, yet the intuitive software makes it very easy to use.

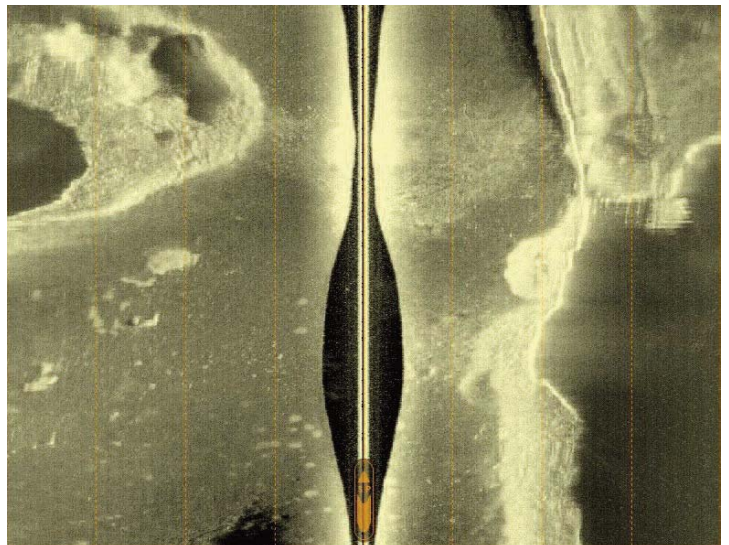


Image of the seabed produced by StarFish

System Specifications

System Parts		
Sonar		Starfish 450F Sonar Head (Inc. 20m tow cable) Starfish 450 Top-Box (Inc. USB interface cable)
Power Supplies		Universal AC mains to DC power-supply (Inc. international AC adaptor) 2m cigar plug and lead Crocodile-clip to cigar socket adaptor.
Software		Starfish Interface Software
Documentation		User manual
Legislative Compliance		
RoHS		Full compliance to the 2002/95/EC RoHS directive.
WEEE		Full EN50419 compliance
EMC		TBA

Sonar Head Specifications

Dimensions		
Length		380mm (14.96")
Width		110mm (4.33")
Height		100mm (3.94")
Weight		
Air		Approx 2.0Kg (4.41lb)
Water		Approx 1.0Kg (2.20lb)
Towing cable		
Length		20m (65.6ft)
Breaking Strain		≥150Kg (330.7lb) Kevlar reinforced
Construction		Black polyurethane jacketed, with internal Kevlar reinforcing member
Construction		
		Reinforced black polyurethane rubber
Transducers		
Arrangement		Dual fin mounted transducers, with 30° down angle from horizontal.
Vertical beam-width		60° nominal (@ -3dB point)
Horizontal beam-width		1.7° nominal (@ -3dB point)
Operating frequency		450KHz nominal.
Transmit Source		
Power Level		TBA

All specifications are subject to change in line with Trittech's policy of continual product development.

Ref: EDS-SID-003.1

Marketed by: