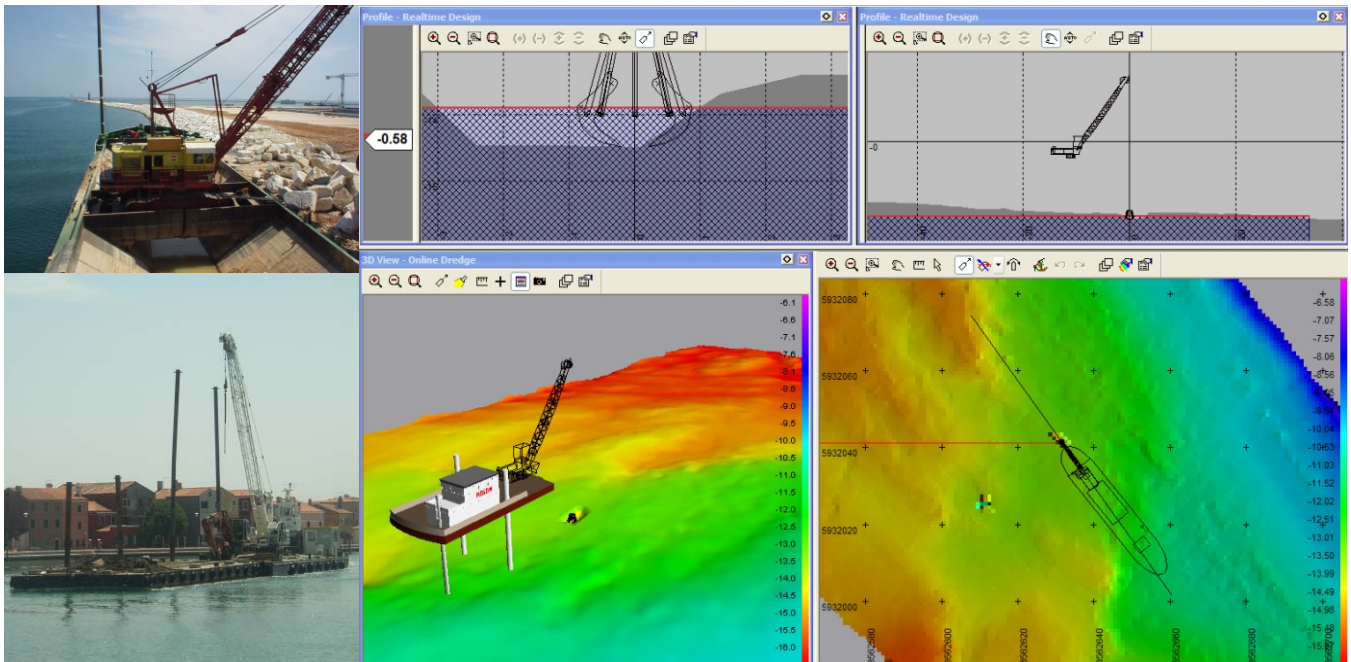


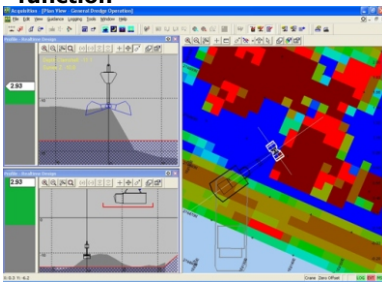


# Dredge Guidance System Clamshell



## PDS2000-Clamshell Dredger

- **Designed for dredging - Dredging to design**
- **Efficient dredging**
- **Visualization of crane, clamshell and vessel**
- **Shows design and depth in one profile**
- **Shows updated dredged depth and progress**
- **Real-time 3D visualization**
- **Support of all clamshells, orange peel buckets, environmental buckets**
- **Combination with stone dump possible**
- **Automatic bucket open/close function**



RESON is a world leader in dredge guidance systems, singlebeam and multibeam echosounders and hydrographic software. The Dredge Guidance System is designed to efficiently create high quality, fast results - whether it is for excavating, building breakwaters, rock dumping and many more.

RESON's developed PDS2000 Clamshell provides the functionality tailored for the dredge operator to carry out his job more efficiently. The operator has a real time overview of the dredger in top and profile views displaying the clamshell, pontoon, Design Depths and color-coded Digital Terrain Model (DTM). The DTM highlights the high and low spots and is updated real-time registering the progress of the dredging work. The update follows the shape of the bucket, clamshell or orange peel bucket and is visible immediately in all the views. The system also shows the open/close status of the bucket. A built-in calibration allows for easy calibration of the cable counters. Up/Down indicators show the operator the exact distance to the seafloor and design depth continuously. 3D-Design models allows the use of complex designs.

Clamshell Guidance Systems has been supplied and installed on a number of cranes with various clients for various type of projects. RESON has proven that PDS2000-Clamshell is an aid to cope with projects demanding the most of your dredger. RESON supplies fully integrated Clamshell Dredger Monitoring Packages, which includes a range of Cablelength counters, inclinometers, ruggedised PC systems, positioning systems, motion sensors, tide gauges, draft sensors and our PDS2000 Software.



# Dredge Guidance System Clamshell

## Clamshell Dredge Guidance System

- PDS2000 Clamshell Guidance System consists of:
  - PDS2000 Clamshell Dredge software
  - Cabinet with RESON interface and PC
  - Sensors to monitor Clamshell performance, depth and position
    - Cable length sensors
    - Bucket Open/Close monitoring
    - Spud pole carrier length sensor
    - Positioning system and Heading
    - Draft sensors
    - List/Trim sensor
    - Angle sensor for boom
    - Others on request
- All equipment, software and installation supplied by RESON

## PDS2000 Clamshell Software

- What you see, is what you've dredged
- Easy to learn
- High Screen update rate, updates as sensor values arrive
- Digital Terrain Model color-coded for high and low spots
- Updated real-time registering the progress of the dredging work
- Update for excavation and dumping
- Shows clamshell and pontoon in top and profile views
- Open/close of bucket
- Easy built-in calibration of the cable counters.
- Shows your crane layout realtime at correct position
- Updates model according the design of the used bucket
- Create and import dredge design models
- Create design from profiles and polygons
- Alarm for zones with access restriction
- Vessel placement to return to position
- Presentation view on pontoon bridge or office

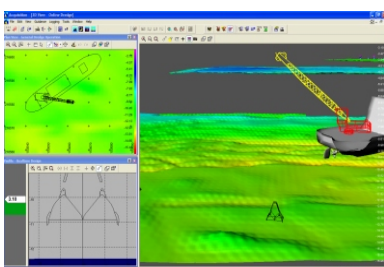
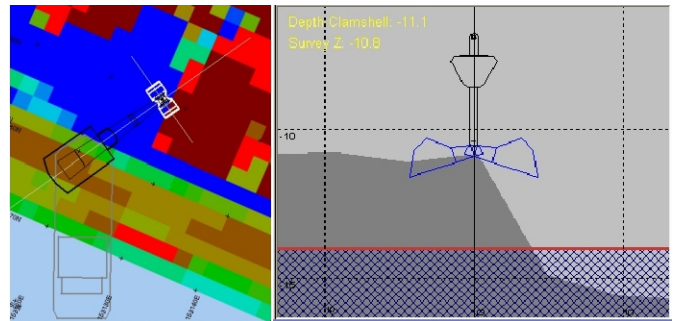
## SUPPORTED TOOLS

- Standard Clamshell
- Environmental Bucket
- Orange Peel Bucket
- Open / Close of all type of buckets and clamshells
- Cable counters
- Calibration of cable counters
- View of Pontoon

## ALSO AVAILABLE

- PDS2000 for singlebeam surveys
- PDS2000 for multibeam surveys
- PDS2000 for Cutter dredger, Excavator, Suction Hopper, Rockdump

**RESON One supplier for your project solution**



## Sea and Land Technologies Pte Ltd

65 Tuas Avenue 1, Singapore 639508  
 Tel: +(65) 6518 0777 Fax: +(65) 6563 0366  
 enquiry@sea-landtech.com.sg  
 http://www.sea-landtech.com.sg