

NaviSound 600 Survey

Advanced Integrated Survey System with
Echosounder & Software



NaviSound 600 Survey

- **Full Hydrographic Package dedicated to NaviSound 600 Series**
- **19" Hi-Res Panel PC with Windows XP Platform**
- **Fast Chart Generation**
- **C-MAP (optional)**
- **Inputs for POS, gyro, motion sensor**
- **Supports 3D helmsman's display**
- **Online coverage model**
- **Water level corrections**

RESON's NaviSound 600 Survey Series provides high-quality soundings and integrated Hydrographic software package. Designed for the professional user in the Hydrographic and Oceanographic market. Best choice for surveying of harbors, waterways, ocean, off-shore, and dredging applications.

Continuous internal data storage with playback capability, and unique RESON developed tamper resistant data set encryption, - offering a verifiable back-up alternative to paper recorder. NaviSound 600 Survey Series provide reliable depth measurement and convenient, easy-to-operate capabilities. Premium features include 19" Hi-Resolution Panel PC for desk, roof or 19" rack mount (marine approved by: ClassNK, GL, DNV, BV, ABS and LRS).

NaviSound 600 Survey Series is delivered with NaviSound Control Center software (NCC) and RESON's Integrated Survey Software. All software packages in full version. The control and display software has the ability to graphically display, record and playback the depth profiles and print-out on a standard Windows printer. RESON's Integrated Survey Software and NCC are fully integrated software programs which enables data linkage between the two systems. The NaviSound 600 Survey Series is separated in two parts for installation of the transceiver part close to the transducers and the Panel PC to be installed in the sonar room.

Individual NaviSound 600 models are as follows:

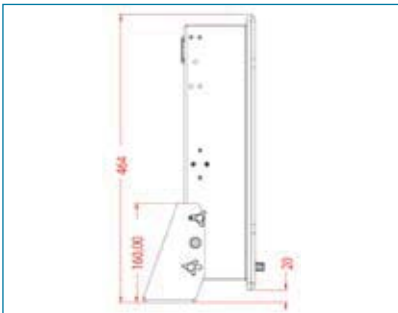
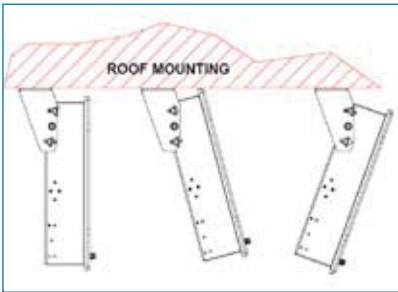
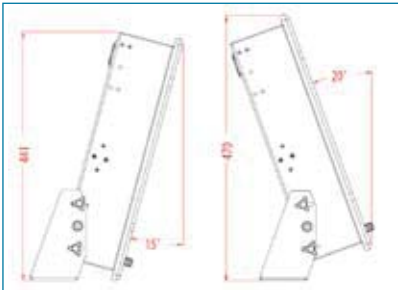
- **NS 620 Survey:**
Standard Hydrographic Survey System supports dual channel Echosounder and RESON's survey software.
- **NS 630 Survey:**
Enhanced Hydrographic Survey System supports triple channel Echosounder and RESON's survey software.
- **NS 640 Survey:**
Improved Hydrographic Survey System supports quad channel Echosounder and RESON's survey software.





NaviSound 600 Survey

Advanced Integrated Survey System with Echosounder & Software



PHYSICAL DIMENSIONS

Dimension; Weight:	444x483x100 mm; 17.5x19.0x3.9 in (HxWxD); 11.0 kg; 24.3 lbs
Temperature Operating	0° to +45°C (32° to 113°F)
Temperature Storage:	-10° to +70°C (14° to 158°F)
Humidity:	Non-condensing
Panel PC Marine approved by:	ClassNK, GL, DNV, BV, ABS and LRS

INTERFACE

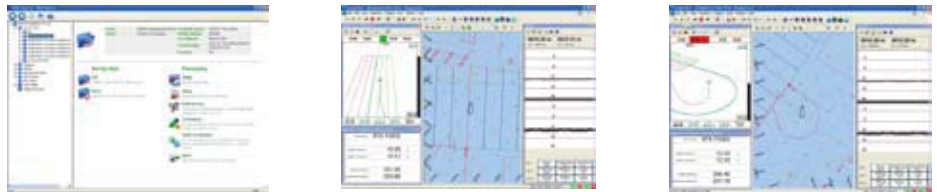
Supply voltage:	24VDC
Power consumption:	100 W
Interface I/O:	4 x serial RS-232C; 4 x USB 2.0; 2 x LAN; 1 x LPT

OPTIONS

- LAN, RS-232C and USB cables
- External power module and AC cable
- Table top/ roof mounting bracket for 19" Panel PC

RESON's Integrated Survey Software

RESON's Integrated Survey Software is a newly designed software package specifically targeted at Singlebeam Hydrographic Survey operations.



RESON's Integrated Survey Software performs all of the tasks necessary to complete your single-beam survey during data acquisition, data processing and charting – quickly and efficiently. RESON's Integrated Survey Software sets the standard for RESON's software: Easy to setup, user friendly and a guide for your surveys. RESON's Integrated Survey Software is integrated with the NS600 so you only have to interface the GPS receiver to run your survey. All functionalities are combined in one package. RESON's Integrated Survey Software is also available as an offline package for data processing in the office.

The echosounder view in RESON's Integrated Survey Software shows the depths and acoustic signals, and provides an easy user interface to operate the echosounder. Raw signal data are recorded and can always be replayed and printed on any Windows operated printer. Survey data are stored and can easily be transferred to any computer using the network and USB port.

RESON's Integrated Survey Software contains powerful modules to quickly start your survey and display charts and volumes. RESON's Integrated Survey Software supports the equipment necessary for your survey and is pre-configured for the most commonly used equipment - RESON's Integrated Survey Software can also be adjusted to your special needs. During the survey the covered area is shown in the plan view. After the survey data can be edited; all data from one survey is displayed in just seconds. Data can be interpolated, smoothed and removed. You can edit single points, a block of points or quickly edit the data automatically using filters to remove outliers. Tidal corrections can be applied from more than one station at open sea and along rivers.

Data can be exchanged between RESON's Integrated Survey Software and the RESON PDS2000 software for multibeam and dredging. The NS600 Survey is therefore suitable for stand-alone use and for integrated use within larger projects.

RESON reserves the right to change specifications without notice. © 2006 RESON A/S
For Acoustical Measurement Accuracy please refer to www.reson.com or contact sales.



Sea and Land Technologies Pte Ltd

65 Tuas Avenue 1, Singapore 639508
Tel: +(65) 6518 0777 Fax: +(65) 6563 0366
enquiry@sea-landtech.com.sg
<http://www.sea-landtech.com.sg>