



**The World Leader in
Subsurface Imaging™**

UtilityScan



**Nondestructive
Location of
Metallic and
Non-Metallic
Utilities Under
Ground**



At the core of GSSI's UtilityScan system is the SIR-3000 radar control unit. The powerful and flexible SIR-3000 is the result of GSSI's nearly 40 years as the world leader in ground penetrating radar (GPR) research and development.

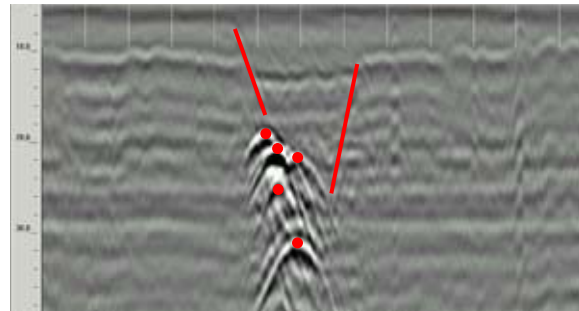
UtilityScan™ is the most accurate GPR system on the market for the non-destructive location of all subsurface utilities. With UtilityScan, users can immediately locate and mark buried service utilities (i.e., gas, electric and sewer lines). This system can also easily detect depth and location of objects such as water mains, underground storage tanks, terra cotta pipes, tree roots and voids. UtilityScan penetrates man-made or natural surfaces, returning data with unsurpassed quality. You can trust your results with GSSI's powerful antennas.

Integrated System

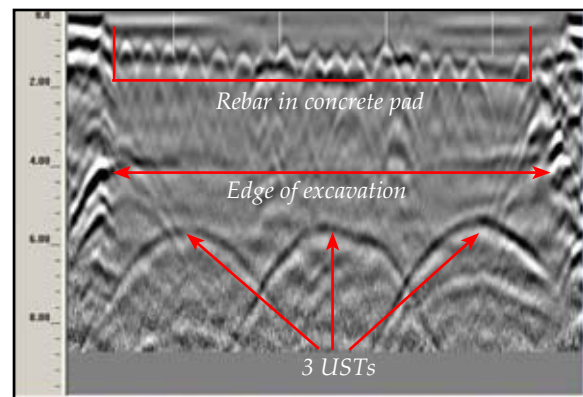
- Lightweight and portable
- Real-time data display
- Back up cursor allows the user to accurately locate targets
- Unsurpassed data quality
- Durable components tested to withstand the toughest conditions
- Two cart choices
- Ability to save data to an internal hard drive
- GPS capable

UtilityScan: Real-time 2D Profiles

The UtilityScan system's exceptional data quality and maneuverable cart system let you locate underground utilities and objects quickly, easily, and accurately.



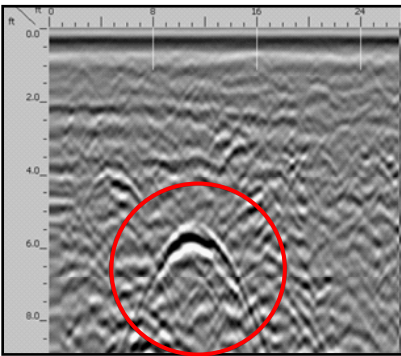
UtilityScan data showing five pipes grouped in a trench



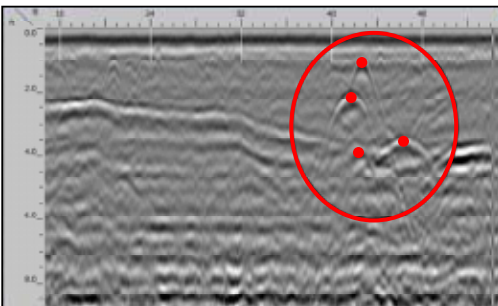
UtilityScan data depicting storage tanks under concrete pad

Typical Uses

- Utility detection – metallic and non-metallic
- Environmental remediation
- Damage prevention
- Road inspection
- Turf assessment
- Geological investigation
- Archaeology and forensics



UtilityScan data showing a concrete storm sewer



UtilityScan data showing a variety of utilities including a gas line, a plastic pipe with fiber optics and a water line

Customize Your System

1 Choose your depth preference



0 - 12 feet
400 MHz Antenna



0 - 18 feet
270 MHz Antenna

2 Choose your cart system

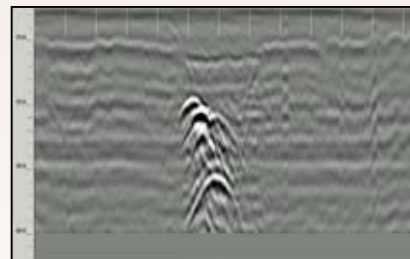


Rugged Survey Cart

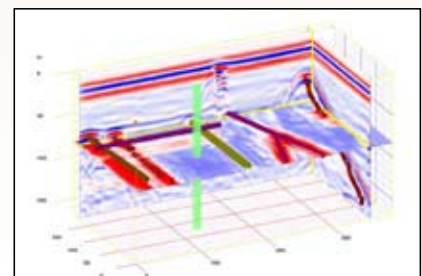


Standard Survey Cart

3 Choose your data presentation



Real-time 2D Profiles



RADAN Data



Rugged Survey Cart

- Weather resistant design
- Portable design with removable handle
- Durable construction
- Multiple antenna options (2600 MHz to 270 MHz)
- Internal integrated survey wheel encoder
- Removable wheels
- Adjustable bracket to change the controllers viewing angle
- 16 inch wheels
- Robust military spec survey wheel connector
- Marking paint can holders



Standard Survey Cart

- Lightweight and flexible design
- Portable and foldable
- Configurable antenna deployment options with center or front mounts
- Multiple antenna options (2600 MHz to 400 MHz)
- Integrated survey wheel encoder
- Removable wheels
- Adjustable bracket to change the controllers viewing angle
- 20 inch front and 24 inch back wheels
- Robust military spec survey wheel connector
- Compatible with SIR-3000, SIR-20, SIR-2000



Center Frequency: 400 MHz
 Depth Range: 0 - 4 m (0 - 12 ft)
 Dimensions: 30 x 30 x 17 cm
 (12 x 12 x 6.5 in)
 Antenna Weight: 5 kg (11 lbs)



Center Frequency: 270 MHz
 Depth Range: 0 - 6 m (0 - 18 ft)
 Dimensions: 45 x 45 x 17 cm
 (18 x 18 x 6.5 in)
 Antenna Weight: 8.6 kg (18.5 lbs)

Control Unit Specifications

- Internal Memory: 2 GB
- External Memory: Based on Compact Flash size
- Display: 8.4", full-color, 800x600 resolution
- 64k colors, clearly visible in sunlight
- Post-processing: On-screen
- Battery: Internal (3 hours), 10.8 VDC
- Ports: RS232, Compact Flash memory, USB master & slave
- Environmental: Water-resistant

System Includes

- Rugged survey cart or Standard survey cart
- 400 MHz or 270 MHz antenna
- GSSI SIR-3000 Data Acquisition System
- One 2-meter Control Cable
- Transit Case for SIR-3000
- Two Batteries and Battery Charger
- AC Adapter
- User Manual
- Sun Shade



The World Leader in
 Subsurface Imaging™



Sea and Land Technologies Pte Ltd

65 Tuas Avenue 1, Singapore 639508
 Tel: +(65) 6518 0777 Fax: +(65) 6563 0366
 enquiry@sea-landtech.com.sg
 http://www.sea-landtech.com.sg