



# StructureScan™ Mini



The StructureScan Mini offers an easy and affordable way to locate rebar, PT cables and conduits in concrete.

## Compact Design

The StructureScan Mini makes concrete inspection easy in tight spaces

## Integrated Tool

All-in-one concrete inspection tool - antenna, positioning system and control unit combo

## Detect Targets Automatically

The StructureScan Mini offers automatic target detection capabilities by identifying targets of interest with small circles to aid in data interpretation

## Durability

Ruggedized plastic casing and wheels for long-lasting performance

## Value

The perfect blend of performance and cost

- 1 All-in-One handheld GPR system
- 2 Ergonomic handle and controls
- 3 Easy to use operator interface with color display screen
- 4 Survey wheel with encoder
- 5 Guiding laser for locating



# StructureScan Mini Solutions

Introducing the smallest and mightiest StructureScan system yet. Use the StructureScan Mini for locating rebar and conduits, post-tension cables, voids and concrete cover information. Reach depths of up to 16 inches (41 cm) for assessment of reinforced concrete structures. Collect concrete data and save it directly onto the internal memory. Best of all, view your data via the ultra-crisp, LED backlit 5.7 inch (14.5 cm) screen on our most portable StructureScan system.

## Using GPR to Locate Rebar and Conduits

Concrete and construction professionals use ground penetrating radar to safely locate targets within poured concrete prior to drilling, cutting or coring. Take advantage of automatically locating targets in real time.

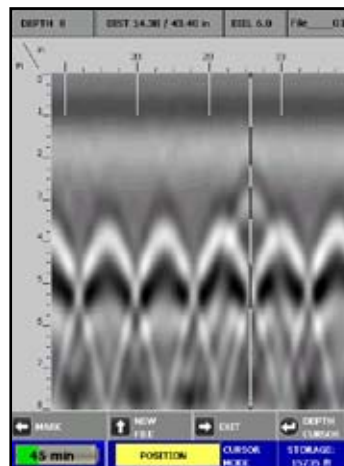
## Establish Location and Depth of Post-Tension Cables in Concrete with GPR

StructureScan Mini helps concrete professionals and contractors find the location and depth of post-tension cables. Let StructureScan Mini identify the characteristics of the survey area, such as where the cables drape, for added safety.

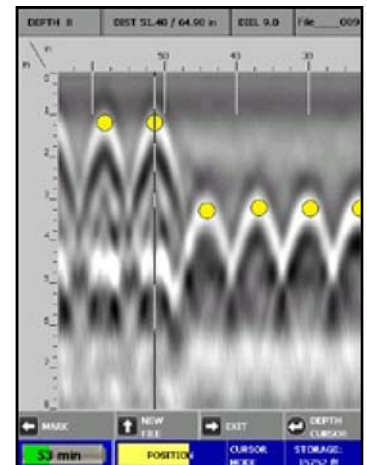
## Detect the Thickness of a Concrete Slab with GPR

Contractors and engineers alike use StructureScan Mini to determine the thickness of suspended or on-grade concrete slabs.

The StructureScan Mini weighs about three pounds, making it conveniently portable while going to various job sites. This new generation of GPR incorporates an automatic target detection program to aid users in interpreting data. The specially designed software clearly marks targets with small circles when it detects rebar or conduit in the concrete. The StructureScan Mini also includes an integrated laser positioning system, located on the front and sides of the unit to help users accurately mark targets.



Data showing rebar and a plastic conduit (backup cursor positioned over conduit).



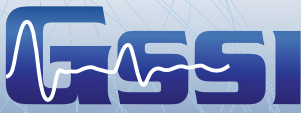
Data showing rebar mat at two depths with Autotarget enabled.

## Specifications

Center Frequency: 1600 MHz  
Depth Range: 16 inches (41 cm)  
Unit Weight (with battery): 3.3 pounds (1.6 kg)  
Dimensions: 6 (w) x 7 (h) x 9 (l) in.  
(15.24 x 17.78 x 22.86 cm)  
Languages: English, Spanish, French

## StructureScan Mini Includes

StructureScan Mini Control Unit  
Dual Battery Charger  
Two Batteries  
Transit Case  
Quick Start Guide



Copyright © 2009 Geophysical Survey Systems, Inc.  
October, 2009



## Sea and Land Technologies Pte Ltd

65 Tuas Avenue 1, Singapore 639508  
Tel: +(65) 6518 0777 Fax: +(65) 6563 0366  
enquiry@sea-landtech.com.sg  
<http://www.sea-landtech.com.sg>