

# Software Solutions: Structure Identification

## RADAN Software

RADAN™ is GSSI's post-processing software. With its modular design, this program allows users to select the processing functions that best suit their needs.

RADAN is Windows™ based, providing a familiar and easy-to-use environment for all levels of experience.

## Get More from Your Data with RADAN's Structure ID Module

RADAN's Structure ID Module provides powerful features for processing GPR data from GSSI's concrete inspection systems. Features include:

### User-Friendly Interface

- Built for all levels of experience- RADAN's Structure ID Module is a Windows™ based software program that provides a familiar and easy-to-use setting for post-processing GPR data.
- Enhanced and simplified 3D viewing.

### Easy Data Processing

- Take some of the human error out of the equation with semi-automatic mapping of rebar locations and depths on simple concrete structures.
- Interactive mapping of conduits or other subsurface features within concrete structures.
- Semi-automatic mapping of deterioration zones within concrete structures.

### Module Versatility

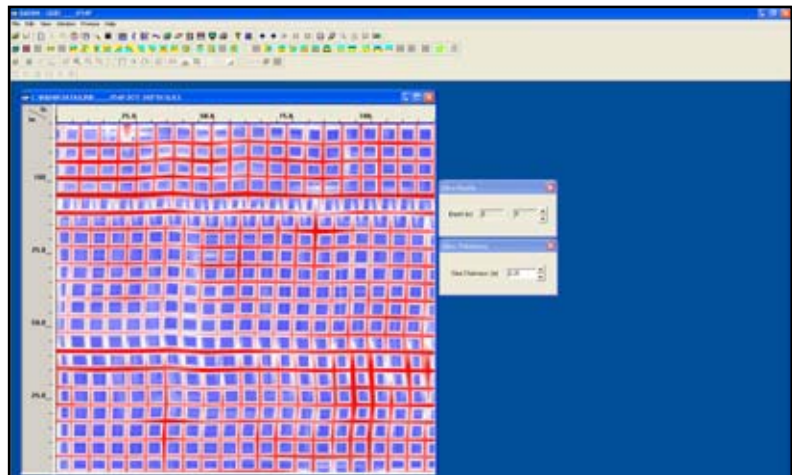
- This module allows for a broad range of civil/structural applications, including structures with different types of reinforcement. Use the Structure ID Module in other applications to automatically find point targets such as utility crossings or archaeological features with lower frequency antennas.

### Generic ASCII Output Files

- Permits simple integration with spreadsheets or other programs.

### Help Feature

- Help feature includes key information, several "how to" guides, index and search feature.



10 ft x 10 ft section of wire mesh. Note overlaps.

