

Software Solutions: Bridge Assessment

RADAN Software

RADAN™ is GSSI's post-processing software. With its modular design, this program allows users to select the processing functions that best suit their needs.

RADAN is Windows™ based, providing a familiar and easy-to-use environment for all levels of experience.

Map Bridge Deck Deterioration with RADAN's Bridge Assessment Module

RADAN's Bridge Assessment Module provides powerful post-processing features for GSSI's BridgeScan data. Features include:

Automatic File Management

- By design, combines all 2D files into a single 3D file for easy interpretation.

Ability to Coordinate Data

- Synchronizes all files based on location of bridge joint. This makes initial data collection quick and adds increased accuracy in survey area.

Easy Data Processing

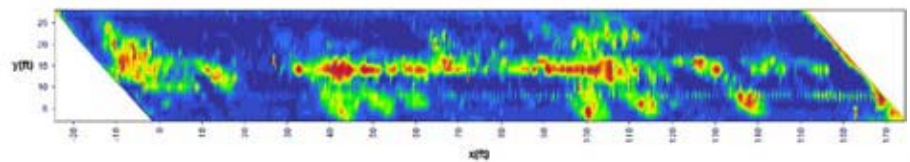
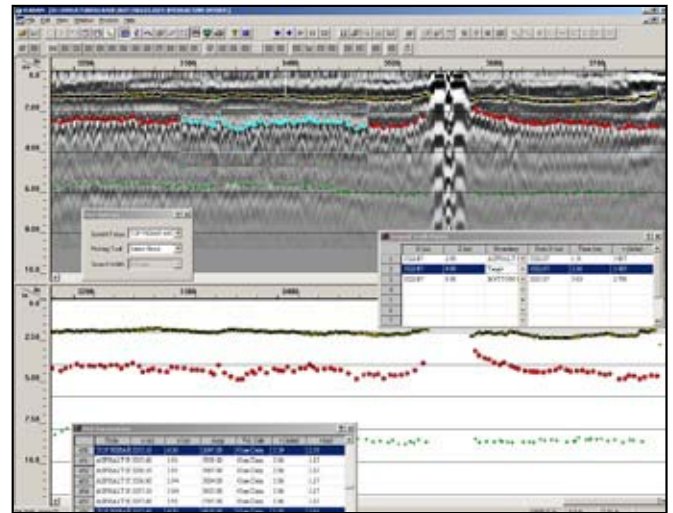
- Take some of the human error out of the equation with semi-automatic mapping of rebar locations and depths on simple concrete structures.
- Spreadsheet view of rebar data

Software Integration

- ASCII output files - for simple integration with spreadsheets, contour mapping, and other software programs

Exclusively GSSI

- Software automatically accommodates and adjusts for bridge skew angle.

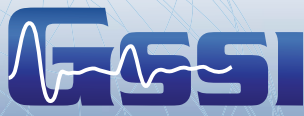


More deterioration

Less deterioration



3D BridgeScan data displayed with DPlot® software



Copyright © 2009 Geophysical Survey Systems, Inc.
July, 2009



Sea and Land Technologies Pte Ltd

65 Tuas Avenue 1, Singapore 639508

Tel: +(65) 6518 0777 Fax: +(65) 6563 0366

enquiry@sea-landtech.com.sg

http://www.sea-landtech.com.sg