



**The World Leader in  
Subsurface Imaging™**

# BridgeScan



**Complete  
Bridge Condition  
Assessment  
System**



This affordable and easy-to-use system provides an effective tool for quickly determining the condition of aging bridge decks, parking structures, balconies, etc.

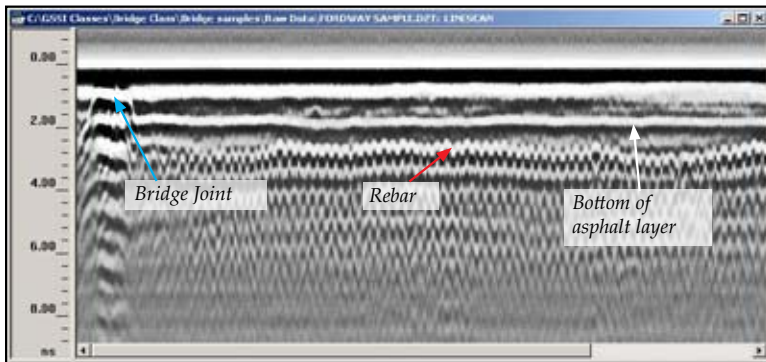
## BridgeScan Benefits

- Identify areas of deterioration inside reinforced concrete within bridge decks, parking structures, balconies, etc.
- Save money - Estimate repair costs accurately
- Obtain accurate concrete cover depth and overlay thickness
- Convenient self-contained cart-based design
- Optional GPS - Automatic integration with GPR data
- Built with pride in the USA

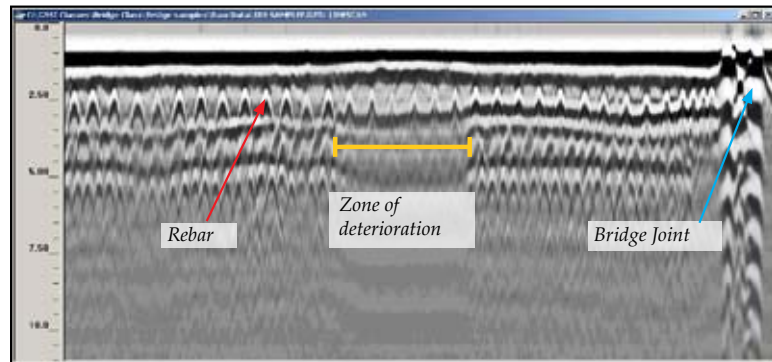
The American Society of Civil Engineers reported that as of 2003, 27.1% of the nation's bridges were structurally deficient or functionally obsolete (ASCE, 2003). The Federal Highway Administration's (FHWA's) strategic plan states that by 2008, less than 25% of the nation's bridges should be classified as deficient.

Traditional bridge deck inspection methods, like hammer soundings and chain dragging, rely on a person to interpret acoustical feedback to determine good and bad areas of concrete and produce a condition assessment of the deck. Existing asphalt overlays must be removed prior to using these methods, and results vary depending on the operator's technique and determination of results. Assessment data normally consists of areas of the deck marked simply good or bad.

An established application of GPR is the accurate condition assessment of bridge decks as well as other reinforced concrete structures. Hundreds of bridge decks have been evaluated using GPR.



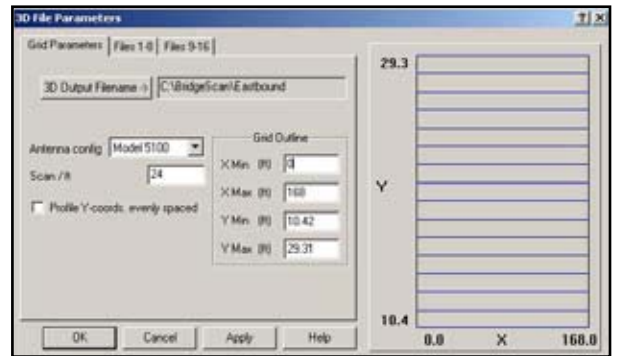
Raw data - asphalt overlaid bridge deck



The State DOTs of New Hampshire and Vermont mandate the use of GSSI equipment to determine contractor pay factor on new structures.

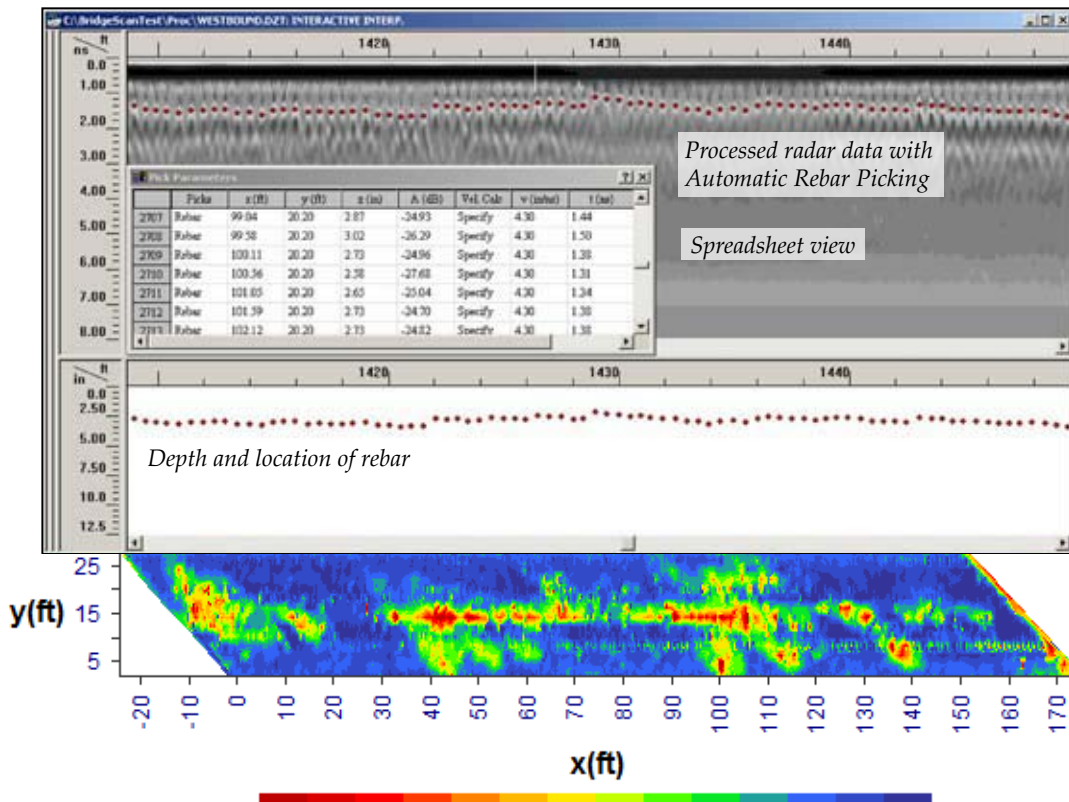
## Bridge Assessment Module

- Concrete cover assessment on new structures
- Concrete condition assessment - including asphalt overlaid concrete
- ASCII output files - for simple integration with spreadsheets, contour mapping, and other software programs
- Spreadsheet view of rebar data
- Data that accommodates and adjusts for bridge skew angle



Bridge Assessment Module Bridge Project Menu

InterActive Interpretation mode



3D BridgeScan data displayed with DPlot® software

## BridgeScan System Includes:

- SIR-3000 data acquisition system
- Survey cart with encoder wheel
- 1600 MHz antenna
- (1) 2 meter control cable
- Transit case
- 2 batteries and charger
- AC adapter
- User manual
- Sunshade
- RADAN Software
- Bridge Assessment Module
- Training (at GSSI)



*Handcart configuration available for evaluating small areas*

## BridgeScan Flexibility

By simply changing antennas, BridgeScan becomes GSSI's UtilityScan system for locating underground utilities - no additional software required!



**The World Leader in  
Subsurface Imaging™**



**Sea and Land Technologies Pte Ltd**

65 Tuas Avenue 1, Singapore 639508  
Tel: +(65) 6518 0777 Fax: +(65) 6563 0366  
enquiry@sea-landtech.com.sg  
<http://www.sea-landtech.com.sg>