

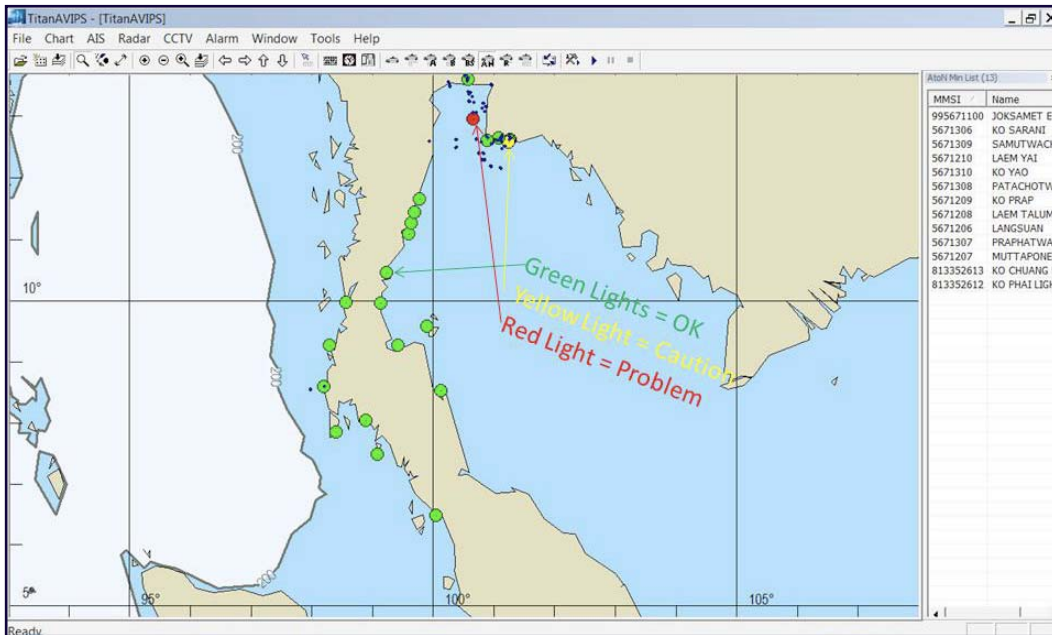


**XANATOS**  
**MARINE**

# TITAN ATO N MANAGEMENT

Xanatos Marines' **TITAN ATO N** (*Aids to Navigation*) **MANAGEMENT** solutions provide our users with the ability to quickly monitor the status and health of AtoN's along a coastline or entrance to a port. By connecting lighthouse or buoy sensors to an AtoN AIS device and broadcasting the information to Base Stations or directly to the internet, we can display the results of the findings from the sensors on our **TITAN** software.

Environmental data such as Wind, Tides, and Currents can also be displayed along with sensor monitoring such as Light Counts, Battery Levels, Solar Panel Charging, and Positioning information.



Operators with appropriate sign-in authorization can enter “geo fencing” areas around any number of buoys which will alert to different user defined conditions such as approaching ships or if a buoy goes off position. In addition, the system will alert the status of the AtoN by means of color coding (*Green – OK, Yellow – Caution, or Red – Alert*). The users can very quickly determine which locations careful monitoring and/or maintenance.



There is a history replay feature which will display all events over a defined period of time. This will allow tracking of a vessel which may have collided with a buoy or other events that are of interest to the authorities.



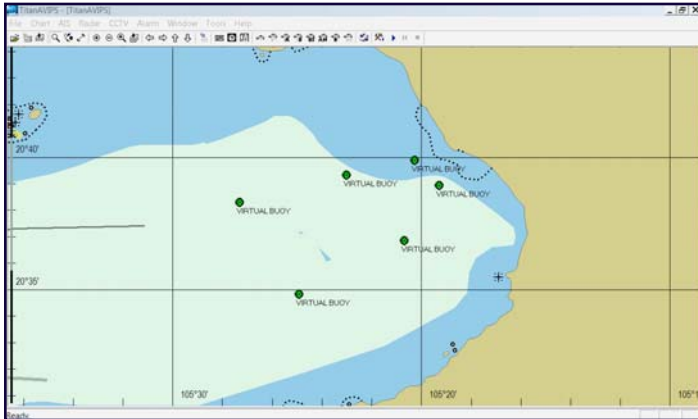
## Features Include:

- ✓ User Defined Settings
- ✓ Fail-Safe Backup
- ✓ Off-Position Guard
- ✓ Battery Life Notification
- ✓ Light Bulb Counts
- ✓ Three Levels of Alarms
- ✓ Environmental Data

## Benefits Include:

- ✓ Asset Management
- ✓ History Tracking
- ✓ Reduced Risk of Theft
- ✓ Maintenance Planning

# TITAN ATON MANAGEMENT



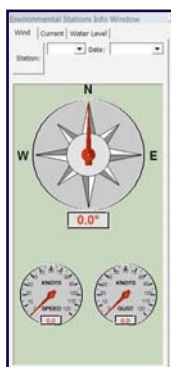
Virtual Buoy Display

In locations where coverage is not possible by an AIS device (*example more than 30 nm from shore*), **TITAN ATON MANAGEMENT** software will work equally well with a Mobile or Satellite connection reporting as needed.

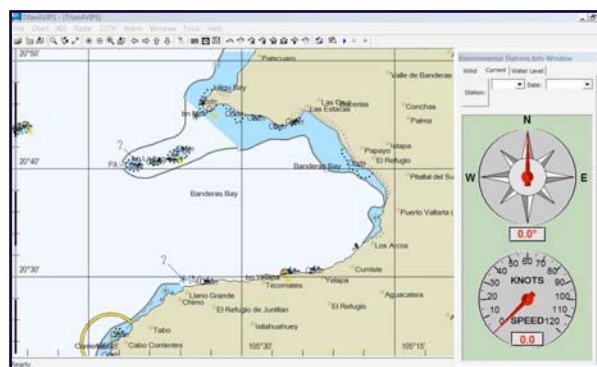
Where there has been an accident or a buoy has gone missing, an operator can place a “Virtual Buoy” in its place. This would be broadcast through an AIS Base Stations’ Message 21 (*safety message*) giving the ships AIS notification of the location and type of buoy. The **TITAN** software displays this information as a constant reminder to the operators that the “Virtual Buoy” has been activated.

Utilizing the database, which is constantly recording the status of the AtoN’s, our user’s are able to better manage the planning of maintenance and frequency of visits for maximization of scarce resources and asset management.

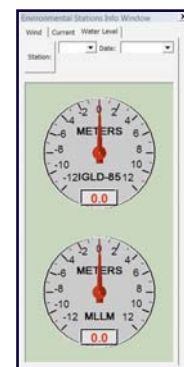
**TITAN ATON MANAGEMENT** records all events to a SQL database providing a management tool used for resource planning. **TITAN ATON MANAGEMENT** enables superior situational awareness and monitoring capabilities that have the potential for long term savings.



Wind Display



Full Screen Current Display



Water Level Display

Authorized Distributor:



**Sea and Land Technologies Pte Ltd**

65 Tuas Avenue 1, Singapore 639508  
Tel: +(65) 6518 0777 Fax: +(65) 6563 0366  
enquiry@sea-landtech.com.sg  
<http://www.sea-landtech.com.sg>



Suite #207 - 3190 St. John's Street, Port Moody, British Columbia, Canada V3H 2C7  
Phone: +1 604 469 5892 Fax: +1 604 469 5895 Website: [www.xanatosmarine.com](http://www.xanatosmarine.com)