

SeaBat 7150

Full Ocean Depth Multibeam Echo Sounder



- **State-of-the-art Modular Design**
- **Ultra High Resolution to Full Ocean Depth**
- **Single and Dual Frequency Operation (12 and / or 24kHz)**
- **880 Beams (mode dependent) to Cover a Total Receive Sector of 150°**
- **Focused Beamwidths of 1° x 1° (24kHz), 2° x 2° (12kHz) (7150-F)**
- **Multi-ping Technology for Yaw Compensation & 100% Coverage at High Vessel Speeds**

SeaBat 7150

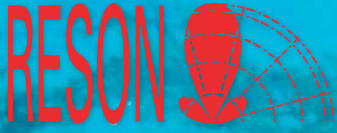
Featuring a true integrated modular dual frequency design, the SeaBat 7150 system provides the user the ultimate in resolution, performance and system expandability.

The system can be configured for either 12kHz and/ or 24kHz operation, providing a choice of both ultra high resolution in shallow water and extended range in deeper waters. The modular design allows the user to increase system resolution to job or budget, simply by adding individual array modules.

Unparalleled technological advancements have been made in the SeaBat 7150. Standard features include increased receive beams for greater sounding density, automatic mode operation, transmit and receive beam focusing, equidistant and equiangular beam spacing and pitch, roll and yaw compensation using multiping.

The SeaBat 7150 is controlled by the 7-P, a high performance sonar processor that manages data flow and signal processing using state-of-the-art FPGA architecture. The 7-P provides a Windows®-based GUI user interface, allowing system configuration, control, data output, storage and built-in-test environment (BITE) displays to assist the operator.





SeaBat 7150

Full Ocean Depth Multibeam Echo Sounder

SYSTEM PERFORMANCE

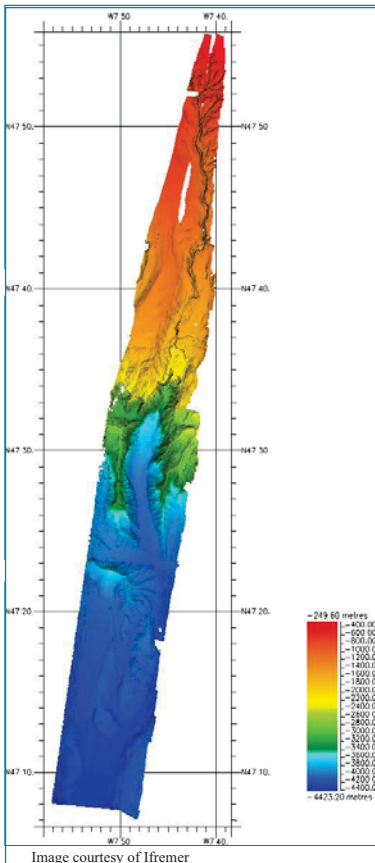
Operating Frequency:	12kHz or 24kHz (nominal with dual frequency option)
Number of Beams:	Up to 880 Receiver Beams Across Swath (mode dependent)
Beamspaceing:	Equi-distant and Equi-angle
Swath Coverage:	150°
Transmit and Receive Beams:	Various, Dependent on the Selected Configuration
Update Rate:	Range Dependent, 15Hz Maximum
Motion Compensation:	Pitch: $\pm 10^\circ$
	Roll: $\pm 15^\circ$
	Yaw: $\pm 5^\circ$ (using multiping)

MECHANICAL

7150-B	Single Frequency 12kHz 2° x 2° beams
7150-C	Single Frequency 24kHz 2° x 2° beams
7150-D	Single Frequency 24kHz 1° x 1° beams
7150-F	Dual Frequency 12 and 24kHz 2° x 2° beams at 12kHz 1° x 1° beams at 24kHz
7150-G	Single Frequency 12kHz 1° x 2° beams
7150-I	Single Frequency 12kHz 1° x 1° beams

OPTIONS

Full Array Calibration
Absorption Profile Input
Mounting Frames
Beam Data Recording & High Speed Export (includes 1TB external RAID array)
Extended Warranty / Support & Maintenance Contracts
System Integration & Training
SeaBat Cables



RESON reserves the right to change specifications without notice. © 2006 RESON A/S
For Acoustical Measurement Accuracy please refer to www.reson.com or contact sales.



Sea and Land Technologies Pte Ltd

65 Tuas Avenue 1, Singapore 639508
Tel: +(65) 6518 0777 Fax: +(65) 6563 0366
enquiry@sea-landtech.com.sg
<http://www.sea-landtech.com.sg>