

# 2000-DSS INTEGRATED Sub-Bottom & Side Scan Sonar

*Advanced System for  
Survey Professionals*



Model 2000-DSS Towfish

EdgeTech, the market leader in deep water sonar systems since 1965, now offers the **2000-DSS**, an integrated combined system that gathers side scan and sub-bottom data utilizing EdgeTech's proprietary Full Spectrum CHIRP technology in water depths up to 2000 meters.

The 2000-DSS System is available with either 100/400 kHz or 300/600 kHz dual simultaneous CHIRP side scan sonar frequencies in addition to a wideband 2-16 kHz sub-bottom profiler.

A standard 2000-DSS System comes complete with a combined towfish, digital telemetry that runs over a single coaxial cable up to 6000 meters long and a 19 inch rack mount topside processor running EdgeTech's DISCOVER acquisition software. Additionally, the 2000-DSS System can be integrated with a number of auxiliary sensors such as magnetometer, depth, altitude and USBL responder.

The 2000-DSS System is priced competitively and has an exceptional price performance value.

## Features:

- Dual simultaneous CHIRP side scan sonar frequencies (either 100/400 kHz or 300/600 kHz)
- CHIRP 2-16 kHz sub-bottom profiler
- 2000 meter depth rating
- Turn key system; easy to operate
- Superior resolution, range & penetration
- Digital telemetry over single coaxial cable
- Improved SNR from Full-Spectrum CHIRP signal processing
- Built-in motion, heading & temperature sensors
- Modular design allows easy sensor removal and integration in AUV/UUV/ROV/ROTV
- EdgeTech quality & reliability you can depend on backed by 24/7 support

## Options:

- Integrated magnetometer
- Integrated pressure/depth sensor
- Integrated tracking system
- Interface to 3<sup>rd</sup> party topside

## Applications:

- Geological & geophysical surveys
- Archeological surveys
- Sediment classification
- Buried pipeline and cable location
- Dredging studies
- Coastal studies
- Scour/erosion investigation
- Marine construction surveys

# 2000-DSS SUB-BOTTOM & SIDE-SCAN SONAR SYSTEM



## Key Specifications

### Side Scan Sonar Specifications

Frequency (nom.)	100/400 kHz	300/600 kHz
Operating Range	100 kHz: 500 meters/side 400 kHz: 150 meters/side	300 kHz: 230 meters/side 600 kHz: 120 meters/side
Beam Width (2-way) & Along Track Resolution	100 kHz: 1.08 deg or 1.90 m @ 100 m 400 kHz: 0.56 deg or 0.96 m @ 100 m	300 kHz: 0.6 deg or 1.0 m @ 100 m 600 kHz: 0.26 deg 0.45 m @ 100 m
Across Track Resolution	100 kHz: 6.3 cm 400 kHz: 1.8 cm	300 kHz: 2.8 cm 600 kHz: 1.4 cm

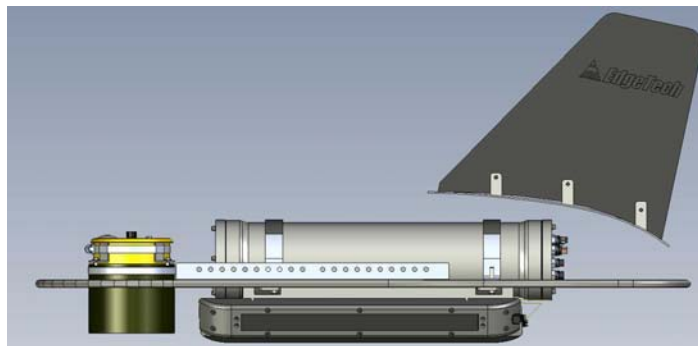
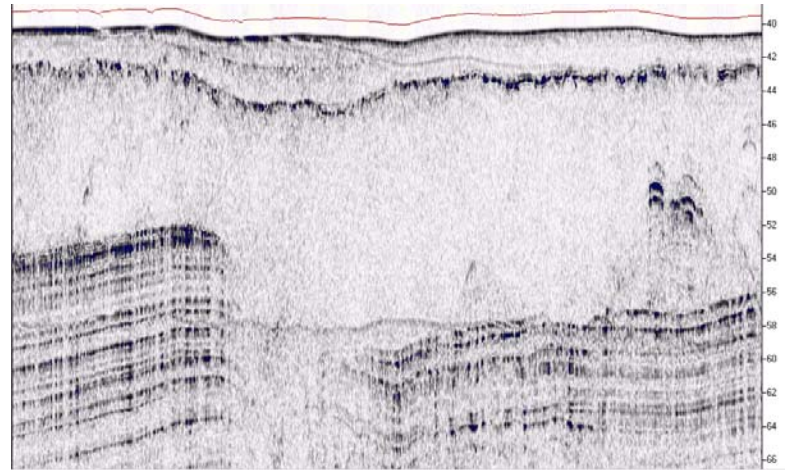
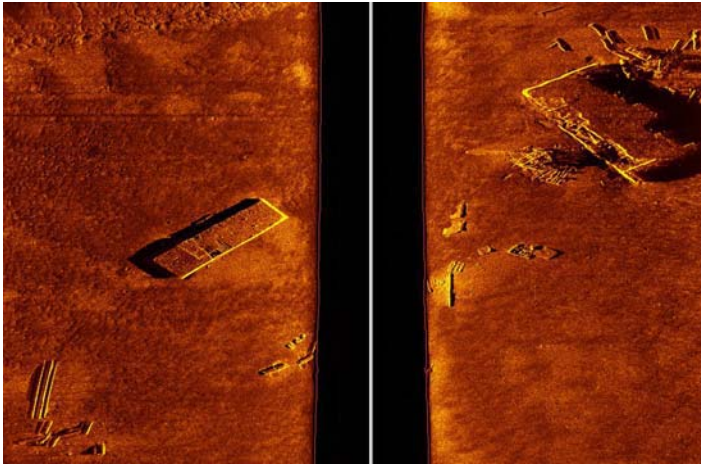
### Sub-bottom Profiler Specifications

Frequency Band	2 - 16 kHz
Resolution	6 - 10 cm
Penetration (typical in soft material)	60 - 80 m

### Towfish Specifications

Length	145 cm (57")
Width	74 cm (29")
Height	84 cm (33")
Weight (air/water)	145 kg (320 lbs) / 78 kg (172 lbs)
Maximum Water Depth	2000 meters

*Specifications subject to change without notice.*



**Sea and Land Technologies Pte Ltd**

65 Tuas Avenue 1  
Singapore 639508  
Website: <http://www.sea-landtech.com.sg>

Tel : +(65) 6518 0777  
Fax : +(65) 6563 0366  
Email: [enquiry@sea-landtech.com.sg](mailto:enquiry@sea-landtech.com.sg)