

A photograph showing GSSI equipment, including a black control unit and a red antenna, on a white tiled floor. A red laser line is projected across the tiles.

**The World Leader in
Subsurface Imaging™**

Concrete Antennas

GSSI Family of Concrete Antennas

Introducing the 2600 MHz
High Resolution Antenna

The new 2600 MHz antenna provides the highest resolution to address challenging applications while delivering the same rugged, field-proven performance you have come to expect from GSSI.

The entire family of concrete antennas, including the 1000 MHz and 1600 MHz, are compatible with the StructureScan system.

Concrete scanning has never been easier—three antennas offering the widest frequency range all combined in one robust system.



Concrete NDT Antennas

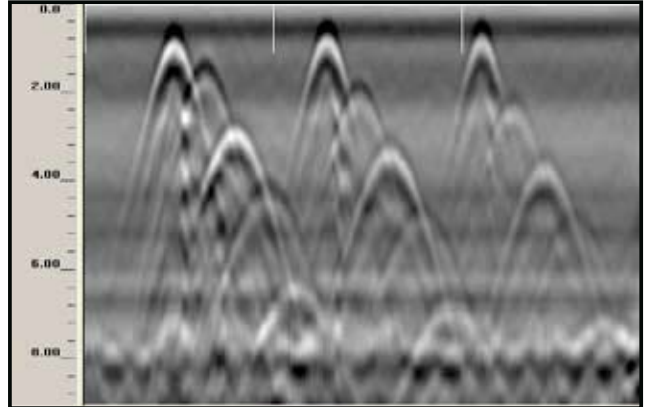
New

2600
MHz

High Resolution



Depth Range to 0.4 m (12 in)



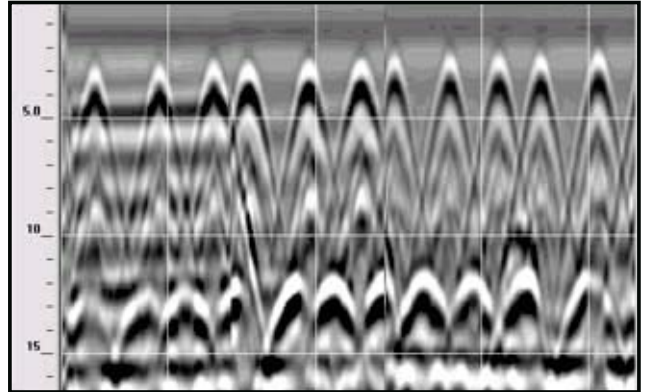
Tightly spaced rebar and conduit in test slab

1600
MHz

General Purpose



Depth Range to 0.5 m (18 in)



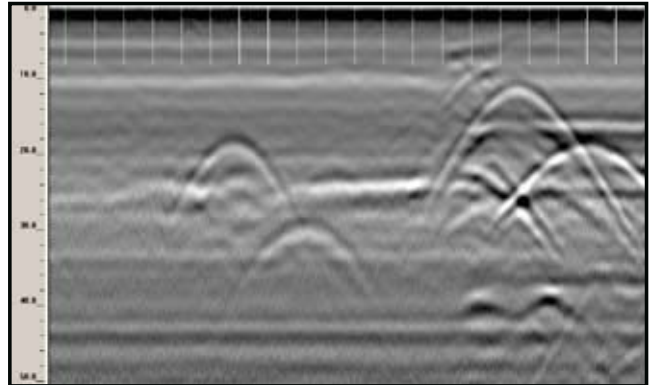
Linescan showing double rebar mat

1000
MHz

Deep Penetration



Depth Range to 0.6 m (24 in)



Series of deeper PVC conduits



**The World Leader in
Subsurface Imaging™**



Sea and Land Technologies Pte Ltd
65 Tuas Avenue 1, Singapore 639508
Tel : +65 6518 0777 Fax : +65 6563 0366
enquiry@sea-landtech.com.sg
www.sea-landtech.com.sg

Copyright © 2007 Geophysical Survey Systems, Inc.
October, 2007